

## example of success



The standard layout (there are four layouts to choose from) offers a well equipped portside galley, a comfortable saloon area (with convertible table to give an extra 205cm berth) and full size navigation station. There is a very spacious owner's cabin, large stern heads and comfortable double aft cabin.



Designed by J&J in collaboration with the in-house Salona development team and with special planning input sought from Maurizio Cossutti (the well-known Italian designer, sailor and race enthusiast), the Salona 41 represents a real team achievement.

From a build viewpoint the exciting newly introduced construction techniques are very exciting and the end result offers comfort

fused with safety and stunning performance, conforming to all IRC and ORC rules.

Delightfully sleek of line, marrying good looks with an eminently practicable, spacious, clear cockpit and an easily convertible closed to open transom the Salona 41 positively invites you to examine all her features.

With its trademark twin steering wheels, narrow lines and low displacement, the under deck deck Harken furler optimises even the lightest of breezes making full use of the 140% genoa in as little as 5 knots of wind – very much a boating pleasure.

Below deck is an ambient mixture of spaciousness, comfortable head room (195cm), tasteful furnishings and hand selected matt finished woods.

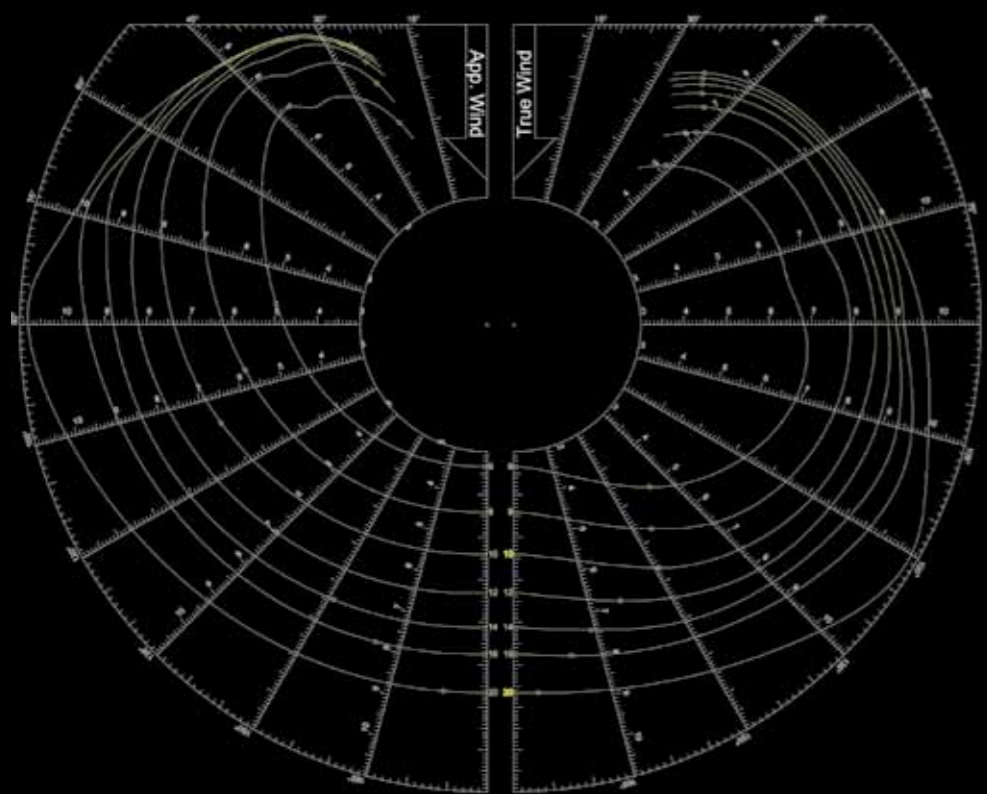
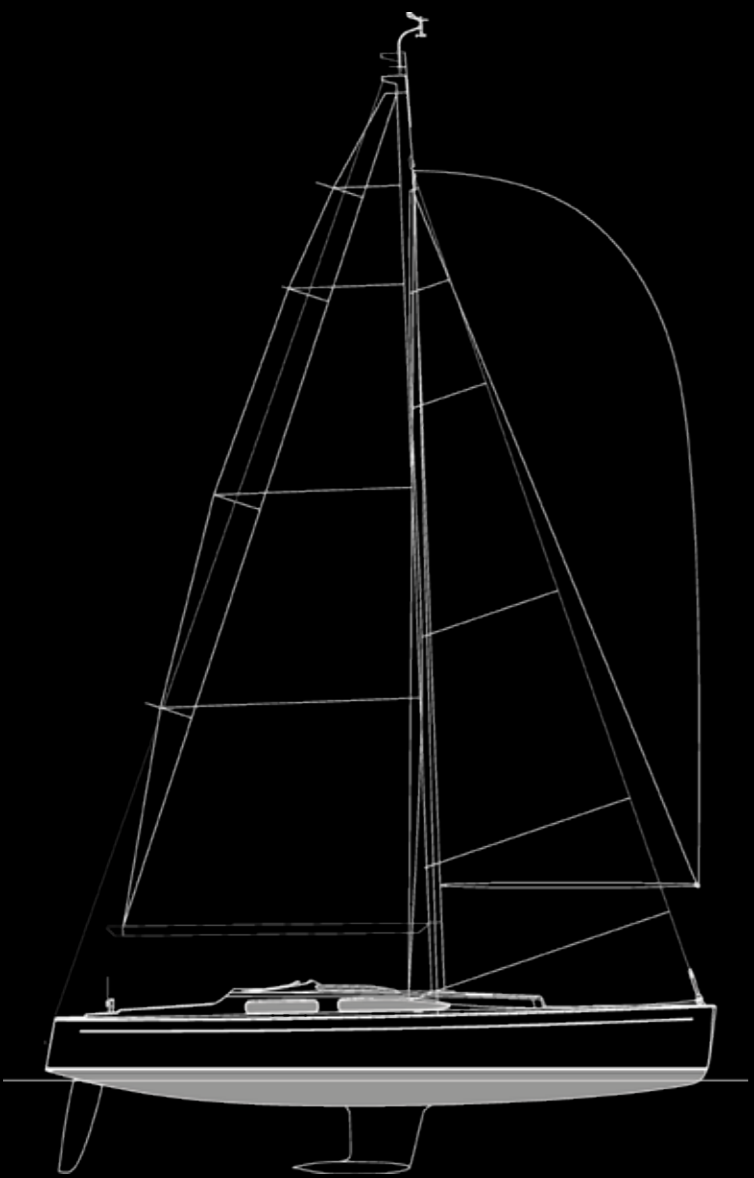
The comfortable interior arrangement has been built with on board living in mind as typified in the owner's cabin which is equipped with three hatches, each fitted with mosquito nets and dark shade plates, two big under seat lockers with large

shelves above and a full size 210 cm berth. There is a self-priming under floor bilge pump with the added ability to switch over to a 3m long pipe for vacuum draining of all bilge and engine compartments.





sailing delight



**salona**  
performance cruiser

technical specification

LOA (hull)	12.5m
LWL	11.45m
B. max. (deck)	3.84m
Draft	1.75/2.00/2.25/2.68
DSPL empty	7200 kg
Ballast	2400 kg
I	15.8 m
J	4.8 m
P	15.6 m
E	5.78 m
Mainsail full batten	53.5 m <sup>2</sup>
Genoa furling	57.6 m <sup>2</sup>
Fresh water tank	220 l
Black water tank	42 l
Fuel tank	220 l
Engine	40 HP
Design Category	A - Ocean
CE Certification	Germanischer Lloyd
Design	J & J design



**salona 41**